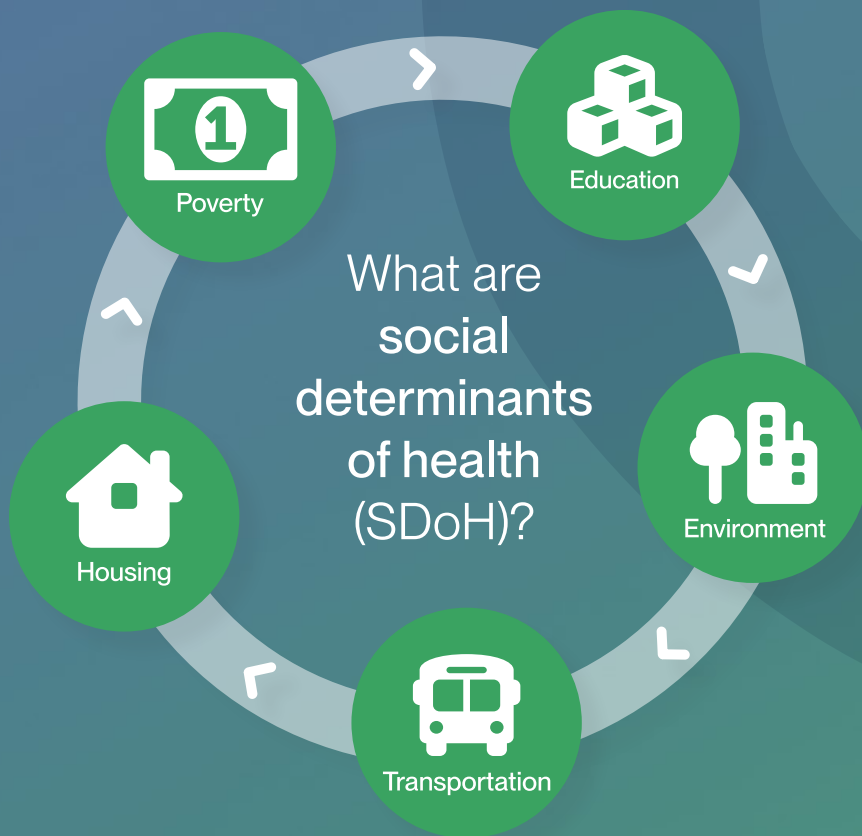


Social Determinants of Health



Who is impacted most?



What to look for in mental health care



Community engagement

Care that partners with community groups to better reach people facing social and economic barriers to health



Accessibility

Providers who offer flexible services to meet different needs, like telehealth visits and sliding-scale fees



Cultural competency

Professionals who meet cultural needs, such as offering counseling in multiple languages